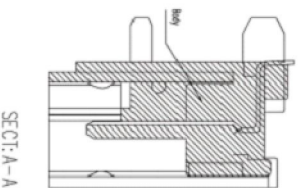
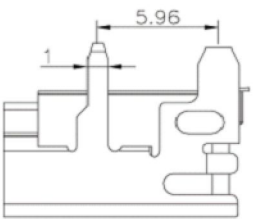
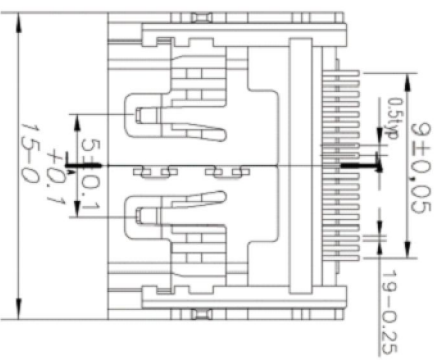
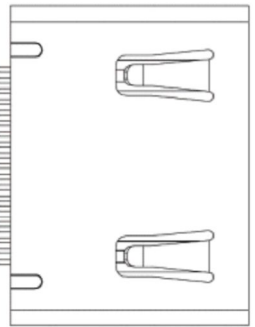
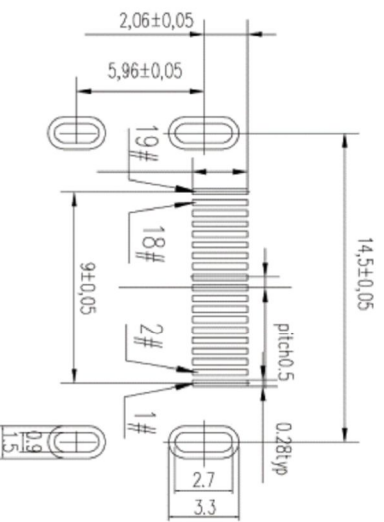
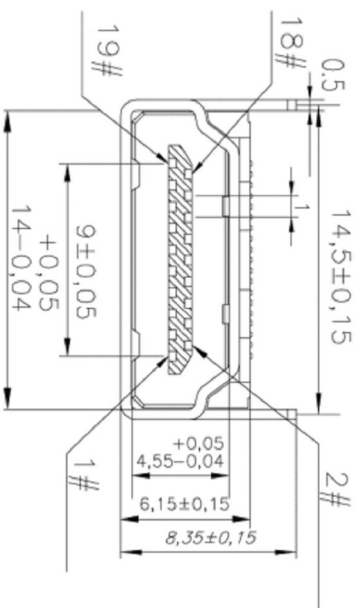


REV.	DESCRIPTION	DATE
A	RELEASE	Jun 02, 2015



- 规格:
1. 插入力: 44.1N MAX.
  2. 拔出力: 7~25N
  3. 耐久性: 10000 CYCLES MIN.
  4. 额定电流: 0.5A
  5. 额定电压: 40V MAX
  6. 耐压: 500V AC MIN. (UNMATED)  
300V AC MIN. (MATED)
  7. 接触阻抗: 30mΩ MAX.
  8. 绝缘电阻: 100MΩ MIN (UNMATED)  
10MΩ MIN (MATED)
  9. 工作温度: -20℃ TO +85℃
  10. 所用材质须符合RoHS要求

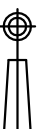


P.C.B. EDGE  
P.C.B. LAYOUT

DESCRIPTION OF PLATING ON TERMINALS

NO.	EXPLAIN	NO.	EXPLAIN
0	GOLD FLASH	3	GOLD 15u"
6	GOLD 30u"		

TOLERANCE  
.0=±0.25  
.00=±0.15  
.000=±0.05  
ANG.=±3°



UNITS : mm

SCALE NONE  
SIZE A7

DRAWER <i>Sheng</i>	NAME
CHECK <i>Sheng</i>	HDMI A TYPE FEMALE SMT
APP'D <i>Sheng</i>	DRAW NO.
PRODUCT SPEC.	JIONS-0185

**Jions**  
WWW.JIONS.COM.CN